

# Release Notes:

## ProCurve Mobility Manager Version 3.0, Update 2

---

### Installation Pre-Requisites

ProCurve Mobility Manager 3.0 (PMM 3.0) Update 2 requires that you have ProCurve Manager Plus (PCM+) version 3.0 Automatic Update 2 installed and configured on your systems.

These release notes include information on the following:

- Software Management ([Page 3](#))
- Special notes ([Page 5](#))
- Enhancements included in the Auto-Update releases ([Page 8](#))
- Software fixes included in the Auto-Update releases ([Page 8](#))
- Known Issues ([Page 9](#))

### Related Publications

For the latest version of any of the publications listed below, visit the ProCurve Networking Web site at <http://www.procurve.com>. Click on **Technical support**, then **Product manuals**.

- Read Me First for the ProCurve Manager, Version 3.0
- ProCurve Network Management Installation and Getting Started Guide, Version 3.0
- ProCurve Manager Plus Network Administrator's Guide, Version 3.0

© Copyright 2005 - 2009  
Hewlett-Packard Development Company, LP.  
The information contained herein is subject to change  
without notice.

### Publication Number

5991-4779  
June, 2009

### Applicable Products

- J9291A ProCurve Mobility Manager 3.0, 50-device license
- J9292A ProCurve Mobility Manager 3.0, +100-device license
- J9293A ProCurve Mobility Manager 3.0, unlimited device license

### Trademark Credits

Microsoft®, Windows®, and Windows NT® are US registered trademarks of Microsoft Corporation. Adobe® and Acrobat® are trademarks of Adobe Systems Incorporated. Java™ is a US trademark of Sun Microsystems, Inc.

### Software Credits

SSH on ProCurve Switches is based on the OpenSSH software toolkit. This product includes software developed by the OpenSSH Project for use in the OpenSSH Toolkit. For more information on OpenSSH, visit

<http://www.openssh.com>.

SSL on ProCurve Switches is based on the OpenSSL software toolkit. This product includes software developed by the OpenSSL Project for use in the OpenSSL Toolkit. For more information on OpenSSL, visit

<http://www.openssl.org>.

This product includes cryptographic software written by Eric Young (eay@cryptsoft.com). This product includes software written by Tim Hudson (tjh@cryptsoft.com)

### Disclaimer

HEWLETT-PACKARD COMPANY MAKES NO WARRANTY OF ANY KIND WITH REGARD TO THIS MATERIAL, INCLUDING, BUT NOT LIMITED TO, THE IMPLIED WARRANTIES OF MERCHANTABILITY AND FITNESS FOR A PARTICULAR PURPOSE. Hewlett-Packard shall not be liable for errors contained herein or for incidental or consequential damages in connection with the furnishing, performance, or use of this material.

The only warranties for HP products and services are set forth in the express warranty statements accompanying such products and services. Nothing herein should be construed as constituting an additional warranty. HP shall not be liable for technical or editorial errors or omissions contained herein.

Hewlett-Packard assumes no responsibility for the use or reliability of its software on equipment that is not furnished by Hewlett-Packard.

### Warranty

See the Customer Support/Warranty booklet included with the product.

A copy of the specific warranty terms applicable to your Hewlett-Packard products and replacement parts can be obtained from your HP Sales and Service Office or authorized dealer.




Hewlett-Packard Company  
8000 Foothills Boulevard, m/s 5551  
Roseville, California 95747-5551  
[www.procurve.com](http://www.procurve.com)

## Software Management – PMM 3.0 Update 2


If you installed PCM 3.0 Auto Update 2, this ProCurve Manager update can be installed in the following ways. The installation method is initially configured during PCM installation, but can be changed with PCM Auto Update Preferences. By default, PCM is scheduled to check for automatic updates every Monday and issue an Auto Update event if updates are available.

### Using Automatic Download and Install

1. Click the  Preferences button on the global toolbar to open the Preferences window and select **Auto Updates for PCM** in the left pane of the Preferences window.
2. In the right pane, select Download and install automatically.
3. To change the schedule when PCM checks for automatic updates, set the Recurrence Pattern.
4. Click **Apply** to save your changes and leave the Preferences window open or click **OK** to save your changes and close the Preferences window.


PCM checks the ProCurve ftp server for updates at the scheduled time. If updates are found for PCM or an installed module, PCM automatically downloads and installs the updates.

### Using Notify if Updates Are Available

1. Click the  Preferences button on the global toolbar to open the Preferences window and select **Auto Updates for PCM** in the left pane of the Preferences window.
2. In the right pane, select Notify if updates are available.
3. To change the schedule when PCM checks for automatic updates, set the Recurrence Pattern.
4. Click **Apply** to save your changes and leave the Preferences window open or click **OK** to save your changes and close the Preferences window.

PCM checks the ProCurve ftp server for updates at the scheduled time. If updates are found for PCM or an installed module, PCM issues an Automatic Update event (shown on the Agent Groups Events tab). Updates are not installed automatically. To install updates, you must manually initiate the download, as explained below.

### Manually Installing Updates from the FTP Server

1. Click the  Preferences button on the global toolbar to open the Preferences window and select **Auto Updates for PCM** in the left pane of the Preferences window.
2. In the right pane, click **Check Now**.
3. In the Select Update Mode window, select the Check for updates on the FTP Server option and click **Next**.

PCM must be connected to the internet and, if using a proxy, it must be configured in Network Settings preferences.

**Release Notes: ProCurve Mobility Manager Version 3.0, Update 2**  
Software Management – PMM 3.0 Update 2

4. Uninstalled updates are displayed with a check next to each one, which indicates that the update will be installed. Click **Next** to install the update, or if you do not want to install an update, uncheck the box.
5. A warning message appears, advising you that any PCM clients will be disconnected. Click **Yes** to continue.
6. After the update package is downloaded, you will be prompted to close the PCM Client. Click **Exit** to exit PCM, complete the update, and restart the PCM services.


You can then restart the PCM client and begin using the updated version of PCM.

### **Manually Installing Updates from the Download Folder**

This method does not require an internet connection from PCM. The update can be downloaded from any PC and copied to the PC containing PCM.

1. Determine the PCM software version by selecting Help>About ProCurve Manager from the PCM menu.
2. Copy the pmm\_3\_0\_update\_2.zip file to the \PNM\server\data\download\autoupdate directory. The default PCM server installation directory is: C:\Program Files\Hewlett-Packard\PNM\server on the workstation where PCM was initially installed. (Do not unzip the file.)

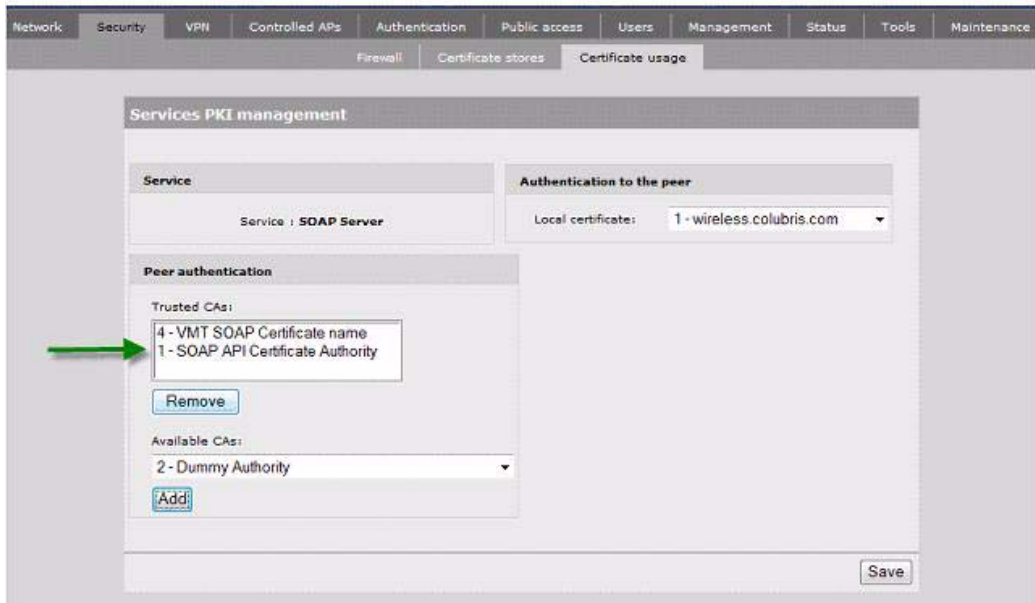
Update files can be downloaded from [www.procurve.com/networkmanagement](http://www.procurve.com/networkmanagement) using any PC and copied to the PC containing PCM.

3. Click the  Preferences button on the global toolbar to open the Preferences window and select **Auto Updates for PCM** in the left pane of the Preferences window.
4. In the right pane, click **Check Now**.
5. In the Select Update Mode window, select the Check for updates in PCM's download folder option and click **Next**.
6. Uninstalled updates in the autoupdate folder are displayed with a check next to each one, which indicates that the update will be installed. Click **Next** to install the update, or if you do not want to install an update, uncheck the box.
7. A warning message appears, advising you that any PCM clients will be disconnected. Click **Yes** to continue.
8. After the updates are installed, you will be prompted to close the PCM Client. If you do not exit PCM manually, after a few moments PCM automatically shuts down. Click **Exit** to exit PCM, complete the update, and restart the PCM services.

You can then restart the PCM client and begin using the updated version of PCM.

## Mobility Manager 3.0 Notes

- Not all Access Points use the same defaults as PCM. If the network contains Access Points that are not configured with the default CLI passwords and SNMP credentials used by PCM, the elements associated with those Access Points (e.g., radios, SSIDS) may not be discovered. The user should either pre-configure the devices with the access credentials used by PCM prior to starting discovery or wait until the device is discovered and use the “Communication Parameters in PCM” wizard to override the global defaults. You can then use Manual Discovery to re-discover the device, and its related radios and SSIDs, or you can simply wait until the next regularly scheduled discovery cycle collects the information.
- If using an MSM device with PMM and HP ProCurve Guest Management Software (GMS) at the same time, their certificates must be trusted by the SOAP Server. PMM and GMS can co-exist since they don't change the same parameters on MSM devices. However, the GMS initially changes the default SOAP certificate, which blocks access to PMM. You must manually re-add the default MSM certificate on the SOAP server while leaving the one added by the GMS on all wireless controllers. To do so:
  1. Access the Security>Certificate usage window of the MSM device web interface.
  2. Verify that both the GMS SOAP Certificate and SOAP API Certificate Authority are shown in the Trusted CAs list

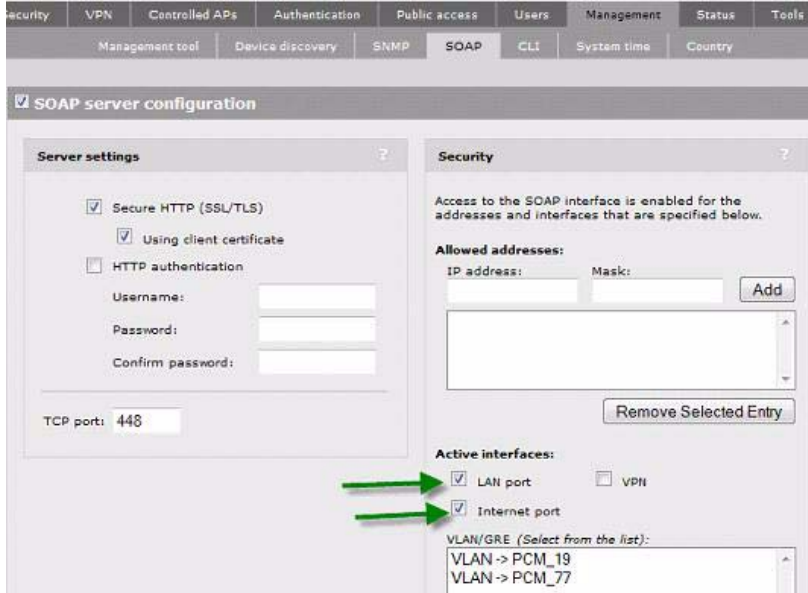


**Release Notes: ProCurve Mobility Manager Version 3.0, Update 2**  
Mobility Manager 3.0 Notes

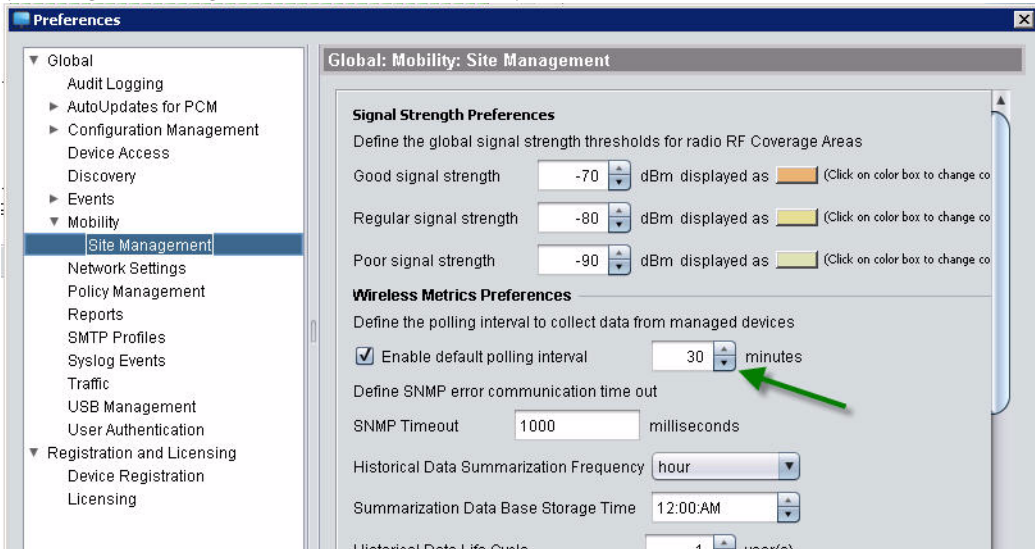
3. If the SOAP API Certificate Authority is not a trusted CA, in the Available CAs list select SOAP API Certificate Authority and click **Add**.
- PMM 3.0 AU1 and AU2 require software version 5.3.1 for MSM devices. Using an older software version results in the PMM tabs being disabled. Verify the software version using the home page of the MSM device web interface:



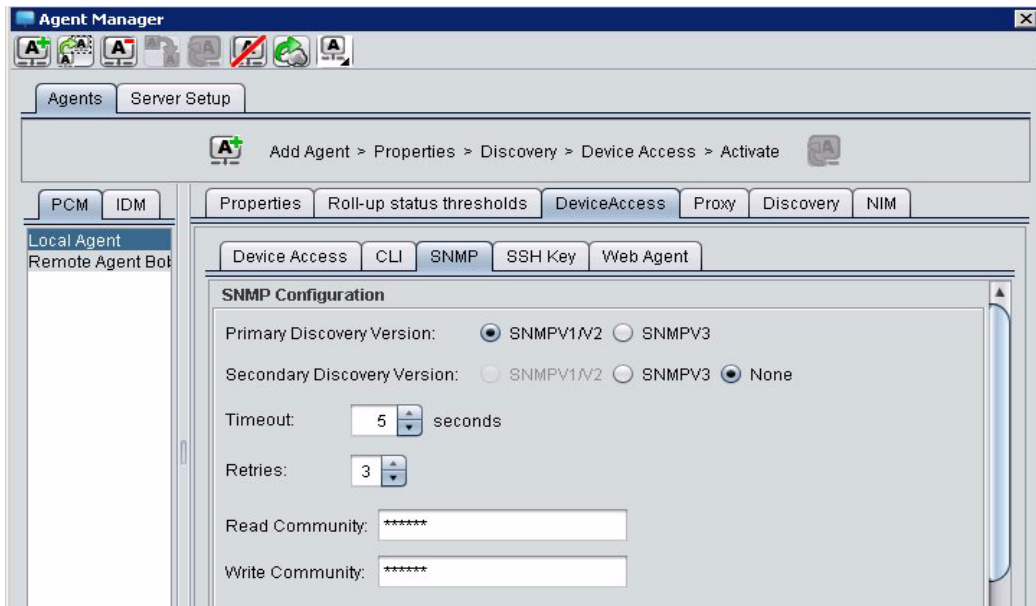
- For PMM to work properly with MSM devices, the SOAP and SNMP interfaces must be properly enabled on all MSM devices. To enable SOAP and SNMP active interfaces, access the Management>SOAP and Management>SNMP windows via the MSM device web interface and check the interfaces that will be used by the device. For example:



- To monitor wireless controllers with more than 100 Access Points, the polling interval must be set to 30 minutes ( Preferences>Mobility>Site Management) and the SNMP timeout ( Agent Manager>Device Access>SNMP) must be set to 30 seconds, as shown below.:



:



---

## PMM 3.0 Enhancements

### Update 2

- Support added for the HP ProCurve MSM 760 and 765 Wireless Controllers.
- Support added for the HP ProCurve MSM 317 Access Point.

### Update 1

- Support added for the HP ProCurve MSM 710/730/750 Wireless Controllers.
- Support added for the HP ProCurve MSM 310/310R/320/320R/335/410/422 Access Points.
- Support added for 802.11n to the RF Planner and the HP ProCurve MSM Access Points.

---

## Software Fixes in PMM 3.0

### Update 2

- **Wireless Metrics History (PR\_38638)** — AP420 History Wireless Metrics hangs after clicking **Apply**.

- **Wireless Metrics (PR\_40120)** — No data is displayed in Wireless Metrics chart for controller with more than 120 controlled access points.
- Online help is not up to date (distributed by PCM).

### Update 1

- **Wireless Devices (PR\_10753)** — IP address is shown in the Wireless Devices table for Radio Ports.
- **Throughput History (PR\_14208)** — Data shown in Throughput History chart in main Dashboard does not match Throughput by Device table.
- **Location Confidence (PR\_16087)** — Adding a managed device with no software version discovered will not allow Location Confidence configuration on devices later added to the canvas.

---

## Known Issues for PMM 3.0

### Update 2

- No known issues in PMM 3.0 Update 2.

### Update 1

- **Associated Stations History (PR\_37821)** — Associated Stations History chart is displaying data even when the Status History chart from the device is showing that it is unreachable.
- **Wireless Metrics History (PR\_38638)** — AP420 History Wireless Metrics hangs after clicking **Apply**.
- **Wireless Metrics (PR\_40120)** — No data is displayed in Wireless Metrics chart for controller with more than 120 controlled access points.
- Online help is not up to date (distributed by PCM).