

Release Notes:

ProCurve Identity Driven Manager Version 2.3, Update 1

ProCurve Identity Driven Manager 2.3 (IDM 2.3) is required in order to install IDM 2.3 Update 1. ProCurve Identity Driven Manager (IDM) version 2.3, Update 1 supports the following products:

- J9012A ProCurve Identity Driven Manager 2.1 base product - 500-user license
- J9013A ProCurve Identity Driven Manager 2.1 base product - upgrade from IDM 1.x to IDM 2.2, 500-user license
- J9014A ProCurve Identity Driven Manager 2.1 additional 2000-user license

NOTE: An IDM 2.x update cannot be installed on Identity Driven Manager v3.

These release notes include information on the following:

- IDM 2.3 Update 1 installation instructions. ([page 3](#))
- Software fixes included in the Auto-Update release. ([page 9](#))
- Known issues included in the Auto-Update release. ([page 9](#))

Related Publications

For the latest version of any of the publications listed below, visit the ProCurve Networking Web site at www.hp.com/go/procurve/manuals. Click on **Technical support**, then **Product manuals**.

- ProCurve Identity Driven Manager User's Guide, Version 2.2
- Read Me First for the ProCurve Manager, Version 2.3
- ProCurve Network Management Getting Started Guide, Version 2.3
- ProCurve Manager Plus 2.3 Network Administrator's Guide

© Copyright 2005 - 2009
Hewlett-Packard Development Company, LP.
The information contained herein is subject to change
without notice.

Publication Number

5991-4729C
July, 2009

Applicable Products

- J9012A ProCurve Identity Driven Manager 2.1 base product - 500-user license
- J9013A ProCurve Identity Driven Manager 2.1 base product - upgrade from IDM 1.x to IDM 2.2, 500-user license
- J9014A ProCurve Identity Driven Manager 2.1 additional 2000-user license

Trademark Credits

Microsoft®, Windows®, and Windows NT® are US registered trademarks of Microsoft Corporation. Adobe® and Acrobat® are trademarks of Adobe Systems Incorporated. Java™ is a US trademark of Sun Microsystems, Inc.

Software Credits

SSH on ProCurve Switches is based on the OpenSSH software toolkit. This product includes software developed by the OpenSSH Project for use in the OpenSSH Toolkit. For more information on OpenSSH, visit

<http://www.openssh.com>.

SSL on ProCurve Switches is based on the OpenSSL software toolkit. This product includes software developed by the OpenSSL Project for use in the OpenSSL Toolkit. For more information on OpenSSL, visit

<http://www.openssl.org>.

This product includes cryptographic software written by Eric Young (eay@cryptsoft.com). This product includes software written by Tim Hudson (tjh@cryptsoft.com)

Disclaimer

HEWLETT-PACKARD COMPANY MAKES NO WARRANTY OF ANY KIND WITH REGARD TO THIS MATERIAL, INCLUDING, BUT NOT LIMITED TO, THE IMPLIED WARRANTIES OF MERCHANTABILITY AND FITNESS FOR A PARTICULAR PURPOSE. Hewlett-Packard shall not be liable for errors contained herein or for incidental or consequential damages in connection with the furnishing, performance, or use of this material.

The only warranties for HP products and services are set forth in the express warranty statements accompanying such products and services. Nothing herein should be construed as constituting an additional warranty. HP shall not be liable for technical or editorial errors or omissions contained herein.

Hewlett-Packard assumes no responsibility for the use or reliability of its software on equipment that is not furnished by Hewlett-Packard.

Warranty

See the Customer Support/Warranty booklet included with the product.

A copy of the specific warranty terms applicable to your Hewlett-Packard products and replacement parts can be obtained from your HP Sales and Service Office or authorized dealer.



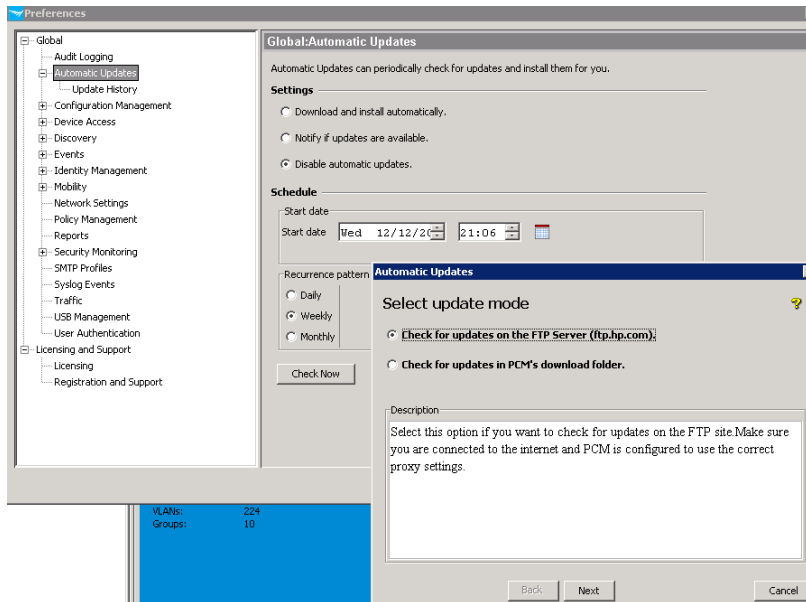
Hewlett-Packard Company
8000 Foothills Boulevard, m/s 5551
Roseville, California 95747-5551
www.hp.com/go/procurve

Software Management – IDM 2.3 Update 1

IDM Server Update Instructions

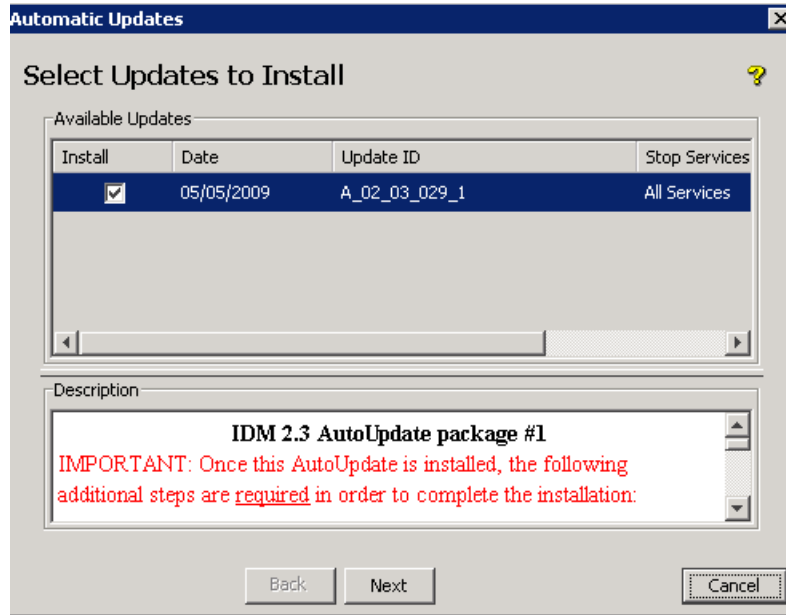
Using the PCM Automatic Update to Install

1. Open the Preferences panel in the PCM Client and select the **Automatic Updates** node.
2. Click the **Check Now** button. Select **Check for updates on the FTP Server (ftp.hp.com)**..

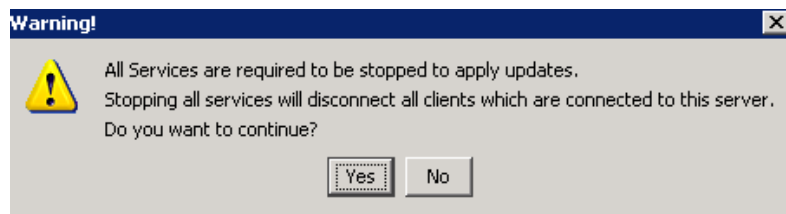


Software Management – IDM 2.3 Update 1
IDM Server Update Instructions

3. A dialog appears with a list of the available update(s). Select the update, ensure that the **install** checkbox is enabled and click the **Next** button.

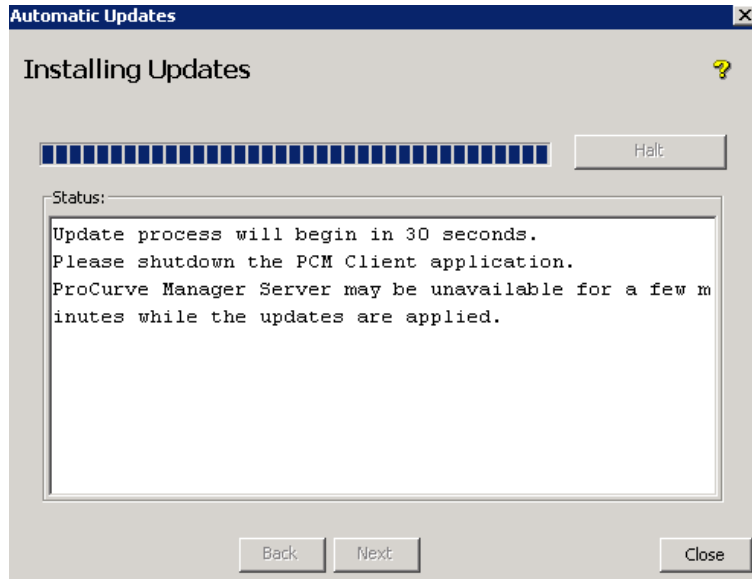


4. A warning message appears, advising you that any PCM clients will be disconnected. Click **Yes** to continue.



5. After the update package is downloaded, you will be prompted to close the PCM Client. Click **Close** to close the pop-up, then close the Preferences window and exit PCM.

The update will be applied and the PCM services restarted.



NOTE: It is critical that the IDM agents are updated to the same patch level as the IDM server. Additional steps are required to install the IDM 2.3 Update 1 to the IDM agents. Refer to the section [“Software Fixes”](#) on page 9 for a list of steps to update the IDM agents.

Using the Manual Process to Install

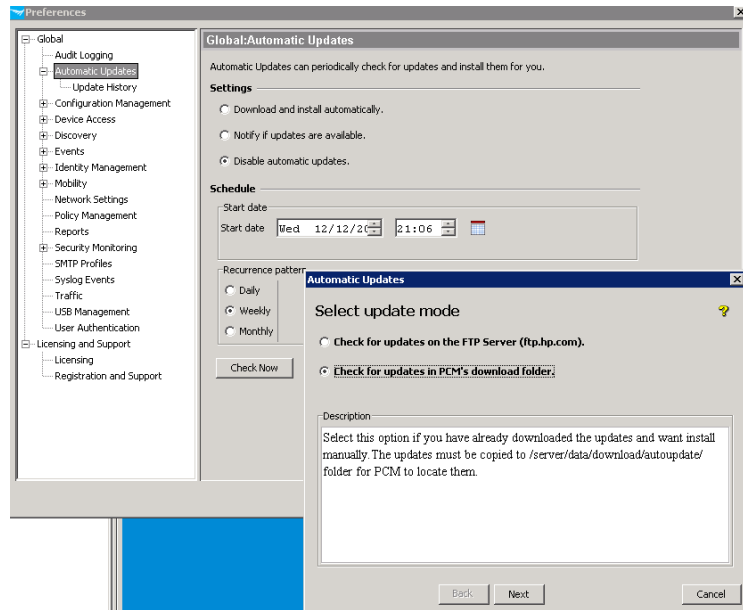
1. Copy the `idm_2_3_update_1.zip` file to the `\PNM\server\data\download\autoupdate` directory. Do not unzip the file.

For reference, the default PCM server installation directory is: `C:\Program Files\Hewlett-Packard\PNM\server` on the workstation where PCM was initially installed.

2. Open the Preferences panel in the PCM Client and select the **Automatic Updates** node to display the Global:Automatic Updates panel.
3. Click the **Check Now** button at the bottom of the panel to display the **Select update mode:** dialog.

Software Management – IDM 2.3 Update 1 IDM Server Update Instructions

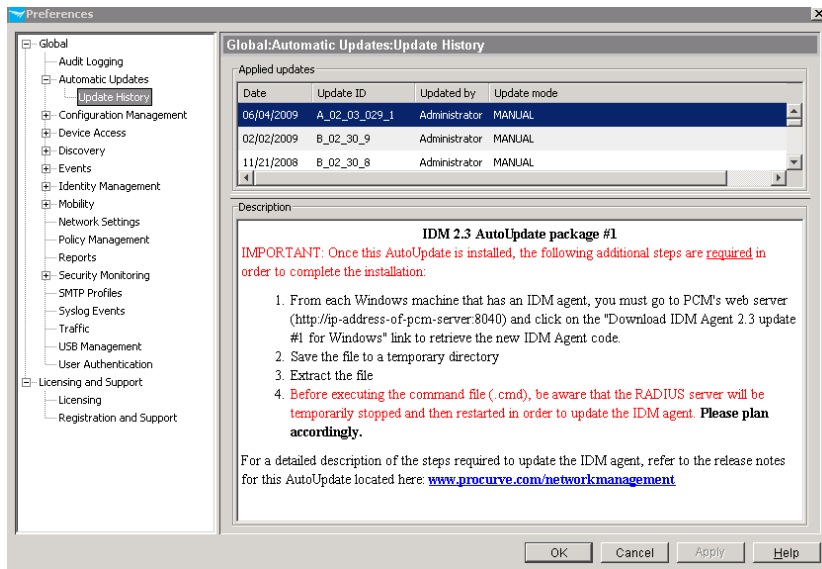
4. Select the **Check for updates in PCM's download folder** option and press **Next**.



5. You should see a dialog box with a list of the available update(s). At this point, continue with the IDM Server Update Instructions (see “IDM Server Update Instructions” steps 3 through 5 on [page 4](#)).

Verifying the Installation

Restart the client and verify that the update was applied by checking the **Update History** node located under the Automatic Updates preference node.



IDM Agent Update Instructions

This update is *installed* on the PCM/IDM Server, but it must be *applied* to Windows Server 2003/IAS and Windows Server 2008/NPS IDM Agents. Steps 2-5 below *must* be repeated for each applicable IDM agent.

IMPORTANT: The IAS/NPS RADIUS server is restarted during the update installation.

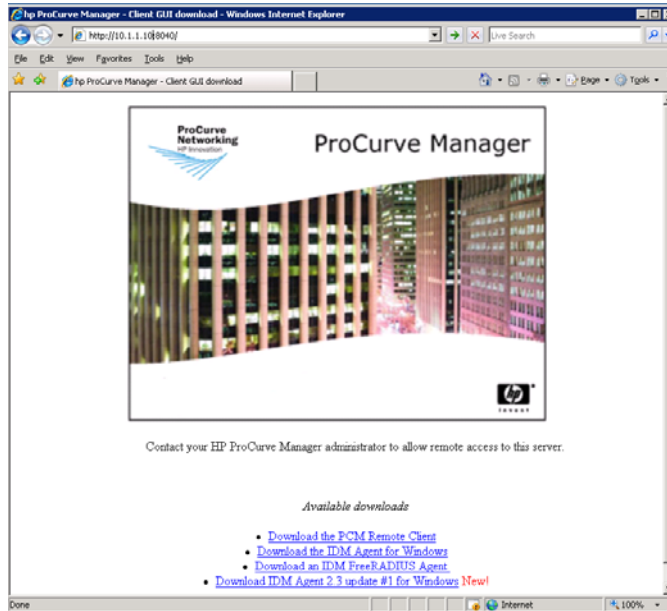
To install IDM 2.3 Update 1:

1. Install IDM 2.3 auto update 1 on PCM/IDM 2.3 server, as described in the previous section.

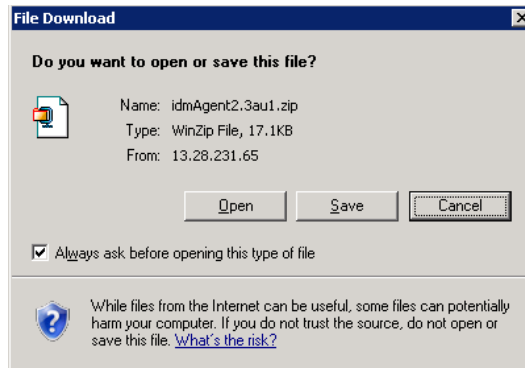
Software Management – IDM 2.3 Update 1

IDM Agent Update Instructions

- From an IDM Agent machine, open a Web browser and navigate to `http://<PCM-Server>:8040` where `<PCM-Server>` is the hostname or IP address of the PCM/IDM 2.3 server.



- Click Download IDM Agent 2.3 update for Windows and save the `idmAgent2.3au1.zip` file.



- Right-click `idmAgent2.3au1.zip` and choose **Extract All...**
- Double-click `installIdmAgent2.3au1.cmd` to install the update.

This should create a folder named **logs** containing a log file, `idmAgent2.3au1.log`, in the same directory where the files were extracted from `idmAgent2.3au1.zip`. Review this file to verify the update completed successfully.

Software Fixes

Update 1

The following improvements were implemented in Identity Driven Manager 2.3 Update 1:

- **Access Policy Group (PR_18662)** — The Default Access Policy Group is sometimes incorrectly accessed.

The event log shows IDM received in invalid session start event. The solution to this issue will be available in IDM 2.3 Update 1, available now from ProCurve.

Known Issues in IDM 2.3 Update 1

No known issues at this time.



© 2005 - 2009 Hewlett-Packard Development Company, LP. The information contained herein is subject to change without notice.

July 2009
Manual Part Number
5991-4729C